

axiom[®]

MULTI LEVEL[®]



High performance
implant solutions





Axiom® Multi Level® Ingenuity fully driven by prosthesis.

+ Intelligent product range

Freedom of complementary solutions, Axiom® BL, Bone Level and Axiom® TL, Tissue Level to improve treatment of patient.

+ Simple and efficient protocols

Easy implementation allowed by single common surgery kit and smart ancillaries.

+ Biological safety

A high-performance design promoting bone stability, maximizing soft tissue volume for predictable results.

+ Solutions driven by prosthesis

A wide range of catalog components, Labside solutions and Simedra® CAD CAM innovations with high added value.

Anthogyr is your single partner providing inter-connected solutions with Axiom® Multi Level® implants and Simedra® customized prosthesis. We design and manufacture ingenious solutions to create added value and to support dental professionals in their everyday dental challenges.

Axiom® Multi level® is an implant concept that offers a smart range of surgical solutions, complementary philosophies with Bone and Tissue level implants, fully driven by prosthetics outcome for patients.



Axiom[®] BL, Bone Level

Endosseous implant designed for biological integration

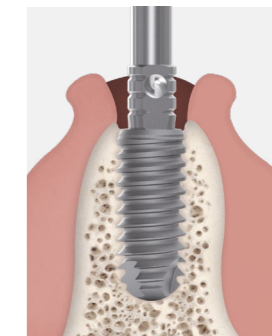


BIOLOGICAL INTEGRATION

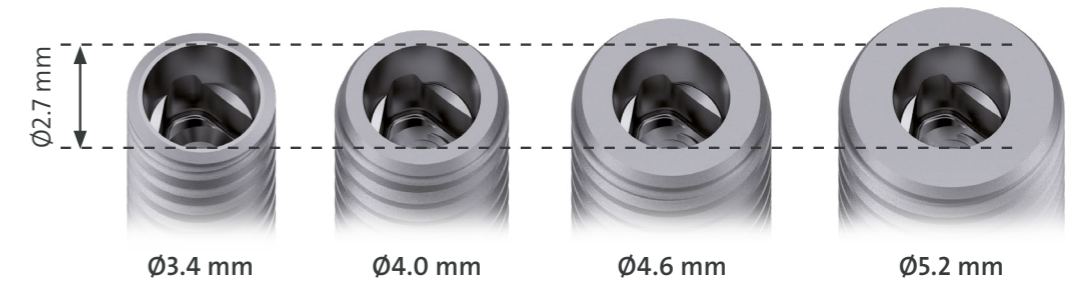
- + **Sealed internal conical connection - Morse type**
 - Homogeneous distribution of mechanical constraints.
 - No micromovements: no bacterial infiltration.
 - Alveolar bone is preserved.
- + **“Platform Switching”**
 - Development of a gingival sleeve.
 - Soft tissue stabilization.
 - Hard tissue stability.
- + **Threaded neck**
 - Optimized bone attachment.
 - The cortical bone is preserved.

AESTHETIC MANAGEMENT FACILITATED

- + **Subcrestal placement favorable to bone preservation**
- + **1 or 2 steps surgery**



SINGLE DIAMETER PROSTHETIC CONNECTION



PROSTHETIC CONVENIENCE

- + **Single diameter prosthetic connection**
 - For all **BL REG** and **PX** implant diameters.
 - Free choice of implant regardless of prosthetic volume to restore.
 - A single prosthetic range to manage.
- + **Intuitive trilobe indexation**
 - Guided, accurate abutment placement.



A SIMPLE RANGE TO COVER ALL INDICATIONS

- 2 profiles - REG and PX
- 4 diameters - 3.4, 4.0, 4.6 and 5.2 mm
- 7 lengths - 6.5, 8, 10, 12, 14, 16 and 18 mm



Axiom® TL, Tissue Level

Transgingival implant designed for biological safety



RESPECT FOR BIOLOGICAL PROCESSES

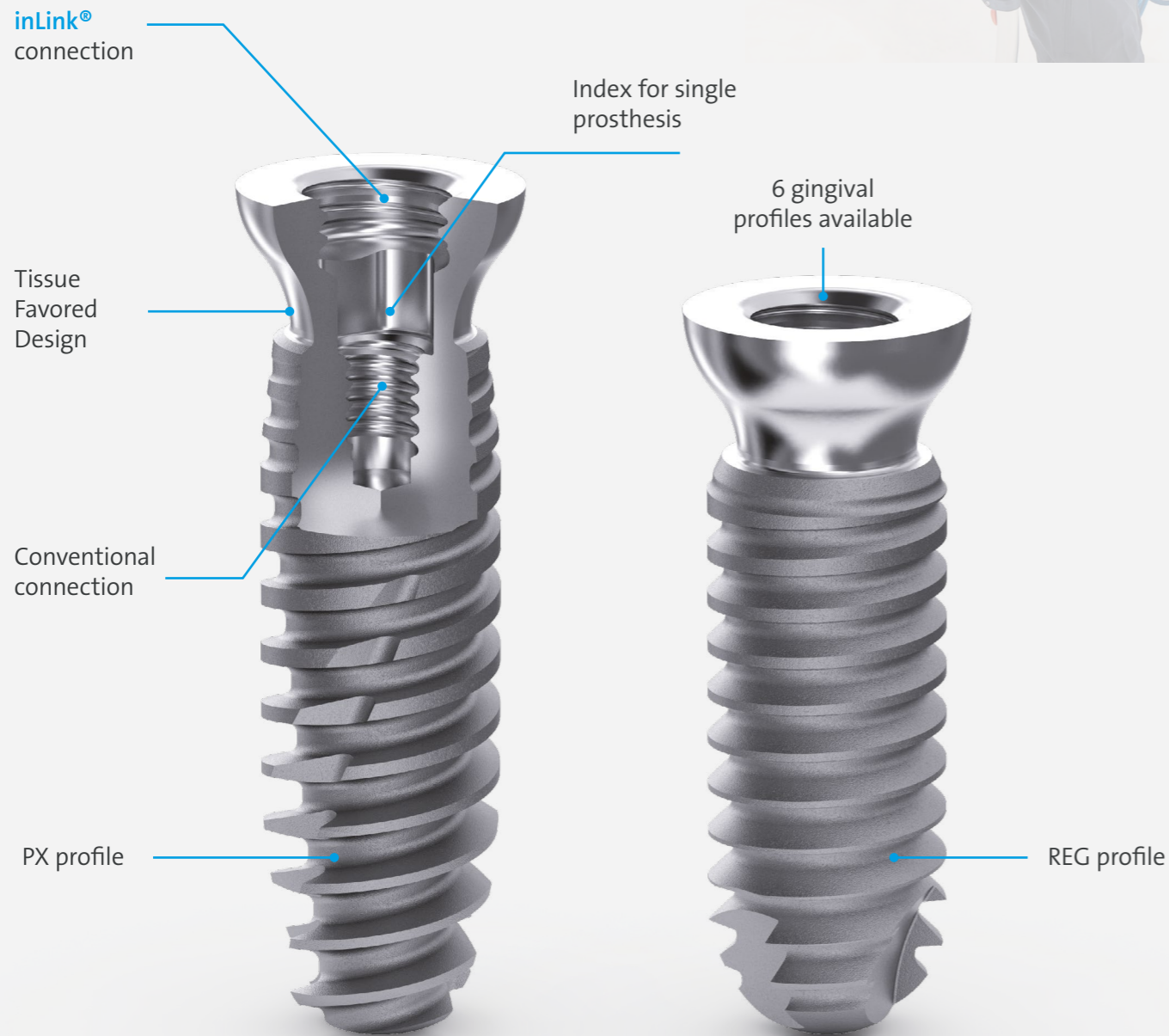
- + **Safe prosthetic approach at gingival level**
 - Total absence of bacterial infiltration at gingival level.
 - Lower risk of peri-implantitis.
- + **Epithelium and connective tissue attachment preserved**
 - Respect for the physical and physiological barriers.
 - Soft tissue stability.
 - Simplified access in posterior: impression and prosthetics.
- + **One-step surgery**

OPTIMAL TISSUE MANAGEMENT

- + **Maximized tissue volume**
 - Tissue Favored Design anatomical profile of implant neck.
 - Promotes tissue organization in gingival sleeve.
 - Epithelium stabilization.



- + **All indications covered thanks to 6 gingival profiles available**
- + **Smooth surface: optimal contact with gingiva**



PROSTHETIC COMFORT

- + **Double connection**
 - inLink® innovative connection for multiple screw-retained restorations direct on Axiom® TL.
 - Conventional connection and trilobe index for single prosthesis.
- + **Possible evolution from single to plural**
- + **Comfortable handling of the prosthesis for natural-looking emergence profiles**
- + **Choice of neck profiles**

A COMPREHENSIVE RANGE TO COVER ALL INDICATIONS

- 2 profiles: REG and PX
- 4 diameters: 3.4, 4.0, 4.6 and 5.2 mm
- 6 lengths: 6.5, 8, 10, 12, 14 and 16 mm
- 2 platforms: R/4.8 and N/4.0 mm
- 3 neck heights: 1.5, 2.5 and 3.0 mm





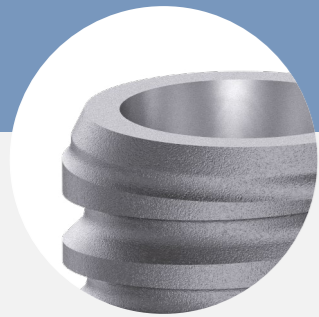
2 body profiles for all bone situations

REG and PX profiles for both BL - TL Axiom® implants



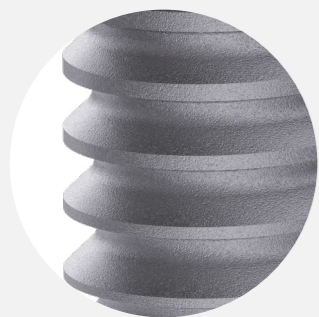
REG PROFILE

Parallel walls implant, all bone types, most clinical indications



+ Straight threaded neck

- Optimize primary bone anchorage.
- Retentive neck with bone compaction effect.



+ Cylindrical-conical shape

- Progressive compression.
- Controlled and guided insertion.



+ Asymmetrical threads

- Self tapping.
- Progressive anchorage.

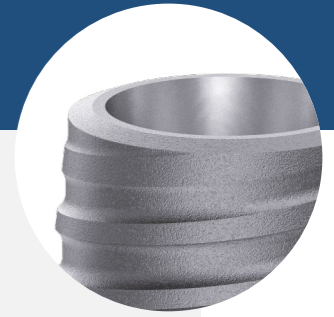
+ Atraumatic apex

- Adapted to sinus lift.



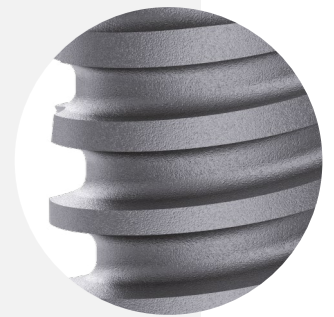
PX PROFILE

Apically tapered implant, low density bone, immediate placement post extraction



+ Reversed conical neck

- Preservation of cortical bone.
- Promotes alveolar bone remodeling.

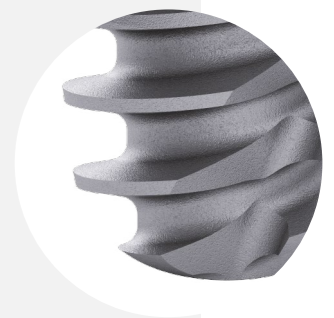


+ Tapered design

- Bone condensation.
- Enhanced initial stability in low-density bone.

+ Deep symmetrical double thread

- Guiding effect, fast bone penetration.
- Self-drilling and self-tapping.



+ Fast penetration apex

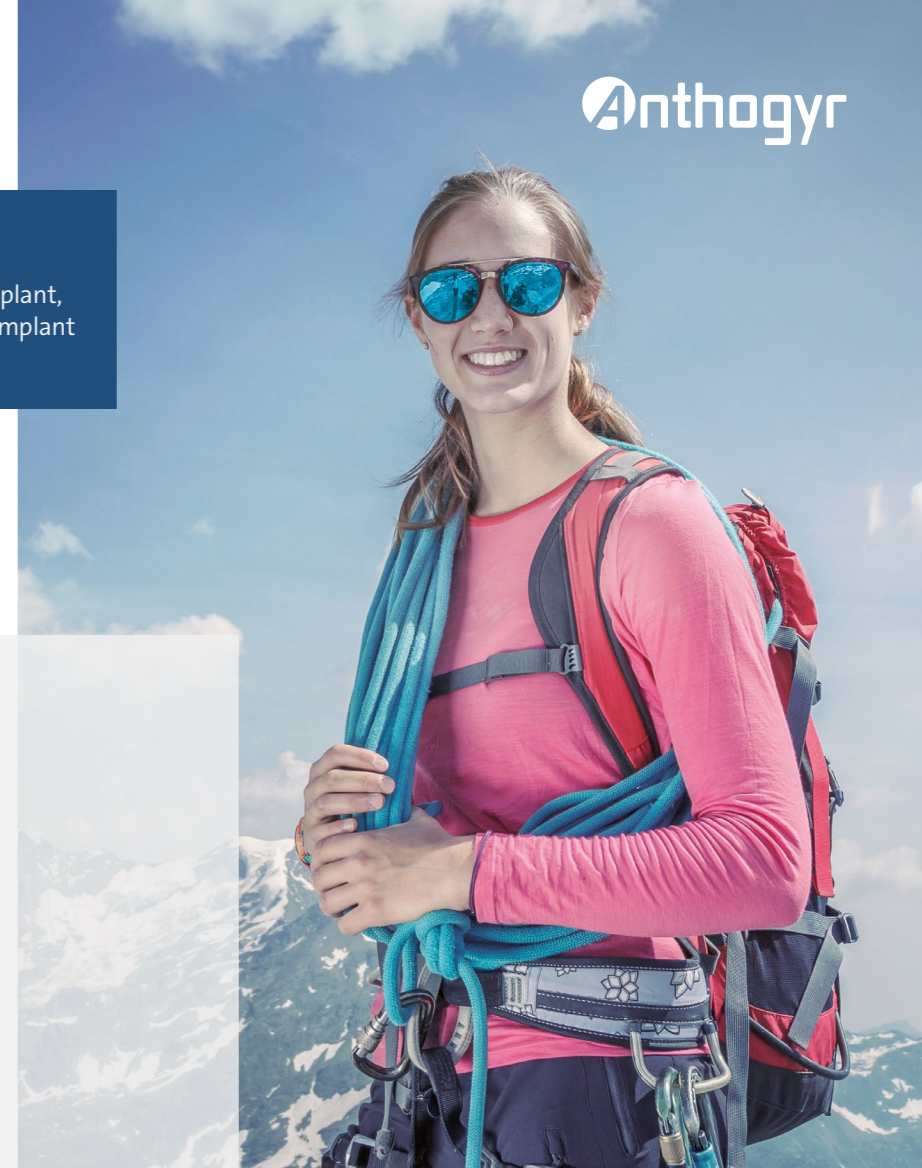
- Optimal anchorage on the apical portion.



Simple and efficient surgical protocols

Cool to know!

To place a REG profile implant, follow the drills until the implant packaging color code!



1 SINGLE COMPACT SURGICAL KIT

REG and PX profiles for both BL - TL Axiom® implants

- + Simplicity
- + Freedom and flexibility
 - Possibility to adapt the implant choice during surgery.
- + User friendly
 - Common kit for Axiom® BL-TL REG-PX profiles.
- + Efficient protocols
- + High cutting-power drills



CLEAR ORGANIZATION FOR YOUR DENTAL SURGERIES

- Intuitive color codes guide.
- Well organized.
- Clear set up



Simeda® CAD CAM prosthesis

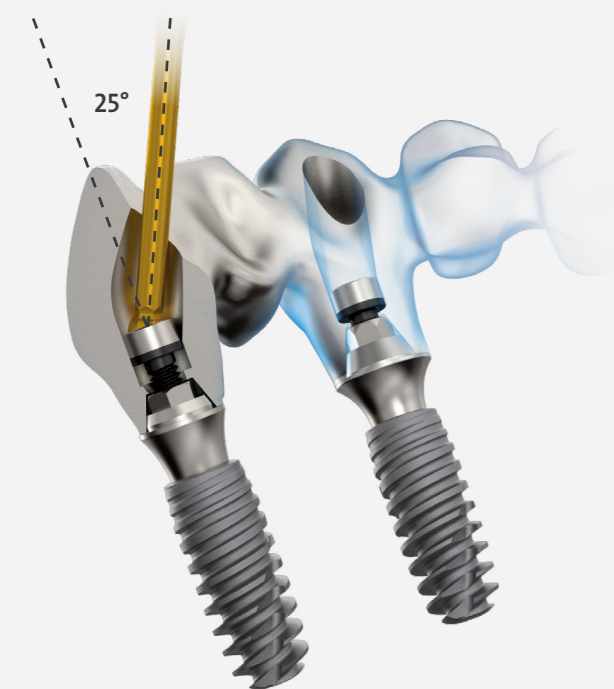
High precision and innovative customized solutions for Axiom® implants and MPS connections*

CUSTOMIZED MULTIPLE-UNIT PROSTHESES

- Cemented and screw-retained.
- Bridges, suprastructures, bars.
- Passive solutions.
- Easy to maintain.
- Angulated Access option.

CUSTOMIZED SINGLE-UNIT PROSTHESES

- Abutments and screw-retained teeth.
- Improved design of the crown for greater durability and better cosmetic support.



PREMIUM MATERIALS FOR LONG TERM CONFIDENCE

Simeda®, specialist in ceramics, also offers a wide range of materials:

- Sina Z®, Sina T®, Sina ML zirconias.
- Titanium and Cobalt-chromium.
- VITA SUPRINITY® PC, VITA ENAMIC® and IPS e.max® CAD.

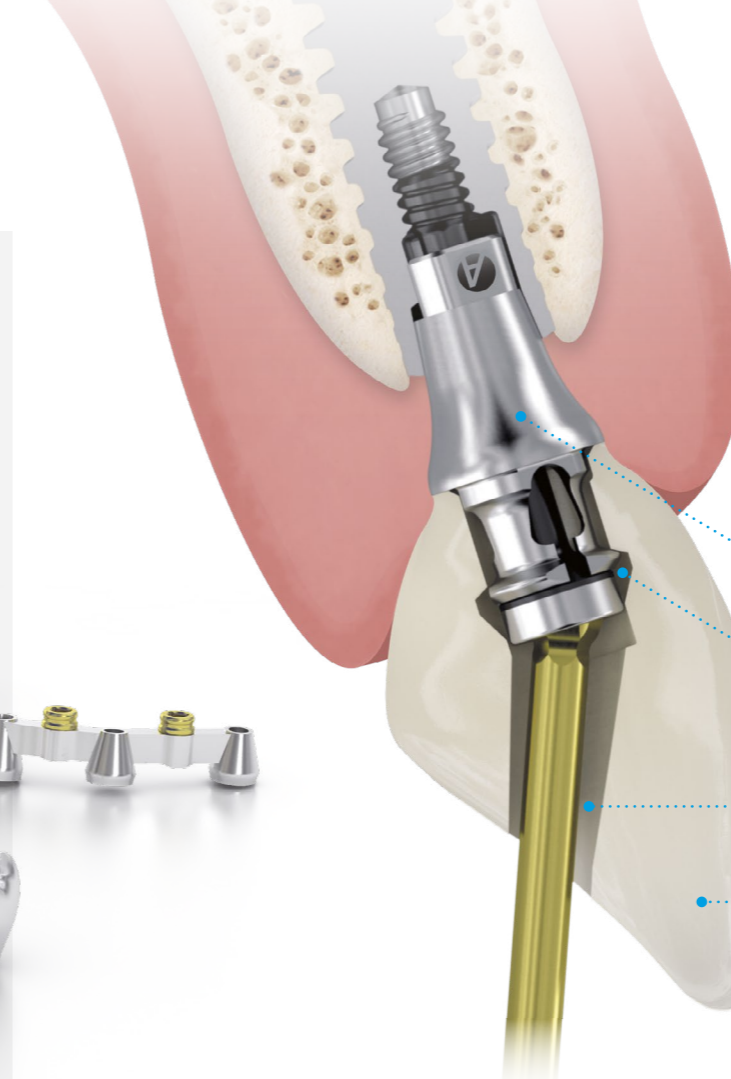
ANGULATED ACCESS ON MULTI-UNIT AXIOM® AND MPS PLATFORMS*

- Angulations: 10°, 15°, 25°.
- Temporary angulated components to prepare soft tissues.

*Full list of compatible platforms available at www.anthogyr.com

AxIN® INNOVATION

Simeda® CAD CAM screw-retained tooth for all sectors



- AxIN® base
- Specific integrated retainer
- Narrow Angulated Access
- Machined AxIN® tooth Simeda® Sina Z, T and ML zirconia

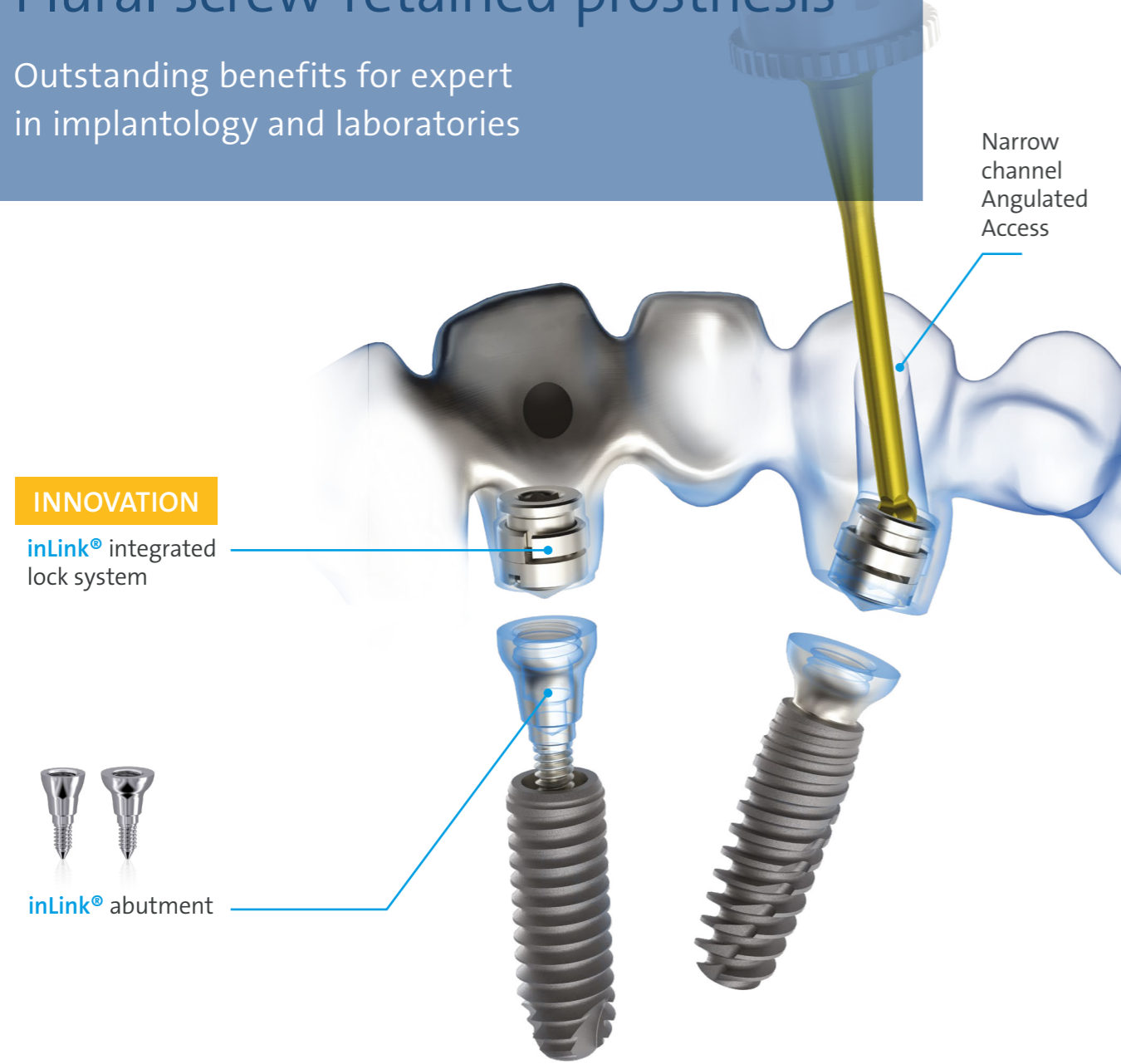
WHAT MAKES AxIN® UNIQUE?

- + **Biological safety**
 - No glue, no sealing cement.
- + **Respect of the natural tooth anatomy**
 - Channels not visible from the outside.
 - Angulation up to 25°.
 - Narrow diameter Ø 2.0 mm.
- + **Temporary angulated components to prepare soft tissues**
- + **Easy handling**
 - Removable titanium base.
 - Screw integrated in the restoration.
- + **Lower maintenance**
 - Channels outside the fragile areas.
 - Lower risk of chipping.
- + **Peace of mind**
 - Full CAD-CAM Simeda® prosthesis.



inLink® Simea® Plural screw-retained prosthesis

Outstanding benefits for expert
in implantology and laboratories



INNOVATION
inLink® integrated
lock system

inLink® abutment

Narrow
channel
Angulated
Access



FLEXIBLE SURGICAL PLACEMENT

- Adjustment of extreme implant differences without intermediate abutment.
- No abutment angulation and indexation handling.

HIGH PERFORMANCE PROSTHESIS ANGULATED ACCESS

- Free orientation between 0° and 25°.
- Small channels inside the prosthesis.
- Narrow emergence diameter.



MECHANICAL RELIABILITY

- Proven mechanical lock tightness.
- Easy maintenance.
- Wide 2.8 mm diameter lock: 25 N.cm torque.

TEMPORARY ANGULATED COMPONENTS

- To prepare soft tissues.



FULL COMPATIBILITY BETWEEN AXIOM® BL AND AXIOM® TL

- + Direct on Axiom® TL
- + With an inLink® abutment on Axiom® BL
- 2 diameters and 2 gingival heights.
- Delivered sterile for immediate placement.

EASY HANDLING AND TIME SAVING

- + Innovative integrated lock system
- No screw removal or handling.
- Fast screw placement.
- Compact vertical design.



Flexibase-Labside CAD CAM solutions

A wide range for maximum freedom

- + Comprehensive Ti-Base range of diameters, gingival heights and platforms
- + Labside CAD-CAM or conventional process
- + Plural and single indications

PLURAL SCREW RETAINED OR CEMENTED RESTORATIONS

- Flexibase for plural direct on **Axiom® TL**.
- Flexibase for Multi-Unit abutments on **Axiom® BL** and **Axiom® TL**.



On **Axiom® TL** On Multi-Unit

SINGLE UNIT SCREW RETAINED OR CEMENTED RESTORATIONS

- Flexibase® for **Axiom®** range.
- Cerec compatible Ti-bases for **Axiom® BL** and **Axiom® TL**.



Axiom® BL: 2 diameters, 3 gingival heights
Axiom® TL: 2 platforms.
Axiom® BL: 3 gingival heights
Axiom® TL: 2 platforms.



Choose your digital workflow

For **Axiom® Multi Level®**

From a conventional impression or an intra-oral scanner, whether you wish to produce the prosthesis in-house or benefit from Anthogyr's industrial expertise with a **Simeda®** prosthesis, complete the digital workflow of your choice.



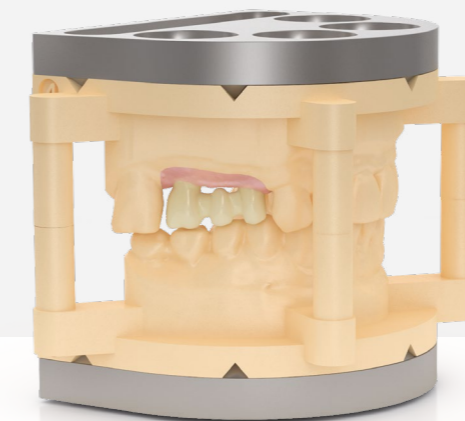
DIGITAL WORKFLOW FROM CONVENTIONAL IMPRESSION

- Conventional impression process with transfers and analogs.
- Laboratory Scan Adapters.
- Flexibase range for in-house milling or **Simeda®** prosthesis with **Serenity®** guarantee program.

DIGITAL WORKFLOW FROM INTRA-ORAL SCANNER

- Digital transfers for intra-oral scanners.
- Printed model analogs.
- Flexibase range for in-house milling or **Simeda®** prosthesis with **Serenity®** guarantee program.

DIGITAL® FOR LABORATORIES ALL INCLUSIVE SERVICE FROM INTRA-ORAL SCANNER



- + A printed model pack of excellence
- + A high precision **Simeda®** prosthesis
- + Full CAD service for model and prosthesis
- + **Serenity®** guarantee program

Prosthetic components

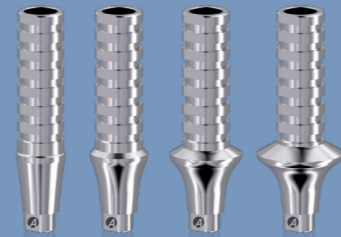
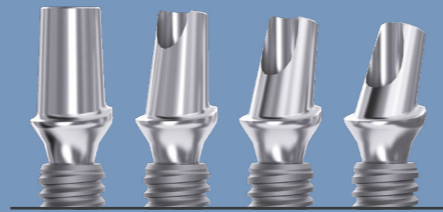
A wide choice of components for all types of prostheses



CEMENTED SINGLE AND PLURAL RESTORATIONS ON AXIOM® BL

Aesthetic abutments

- + A choice of 3 angulations and 4 gingival heights to cover all indications
- + Aesthetic shoulder design adapted for cement-retained prostheses
- + Temporary components for immediate aesthetic answer and optimization of soft tissues



Standard abutments

- + Supplied STERILE for an immediate placement
- + Preservation of soft tissues by reducing intra-oral handling

SCREW-RETAINED MULTIPLE RESTORATIONS ON AXIOM® BL AND AXIOM® TL

Multi-Unit abutments

- + 2 platforms
- + Secondary components common to Axiom® BL and Axiom® TL
- + 2 angulations and 5 gingival heights on Axiom® BL
- + Flexibility: narrow abutment with reduced coronal height
- + Temporary components for immediate loading protocols



Easy handling



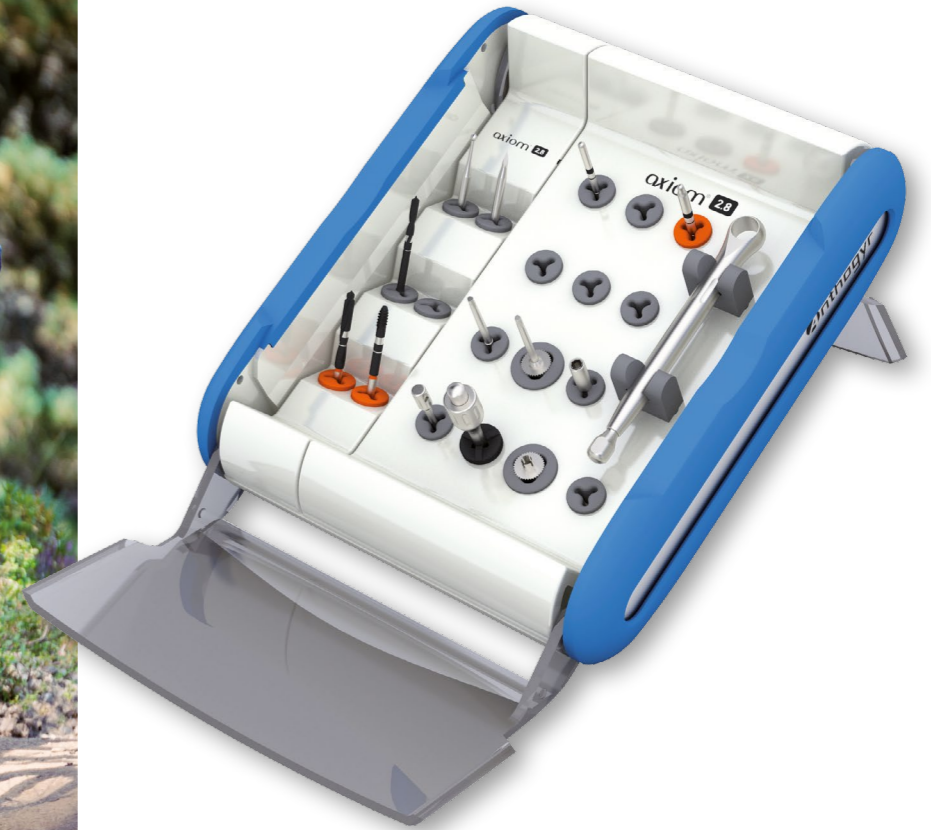
REMOVABLE OVERDENTURE ON AXIOM® BL

- + A wide choice of solutions to address a growing concern
 - Locator® abutments.
 - Ball abutments.



Axiom[®] 2.8

The solution for restricted mesio-distal spaces in the incisor area



+ Conical connection

- Tight seal morse tapered connection with 1.5° half angle.

+ A true narrow two-part implant

- Optimal management of treatment plan and soft tissues.
- Preservation of 2.8 diameter even for prosthetic profile.

+ Straight threaded neck

- Optimized anchorage.
- Retentive neck with bone compaction effect.

+ Cylindrical-conical shape

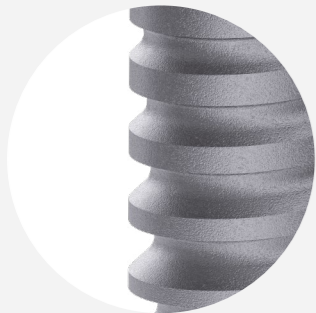
- Implant with controlled and guided insertion.
- Atraumatic apex.

+ Progressive asymmetrical threading

- Self-taping.
- Gradual bone compaction is achieved during threading.

+ Impacted prosthesis

- Controlled and calibrated impaction using the Safe Lock[®] instrument.



DEDICATED SURGICAL KIT

- Easy, practical and logic layout.

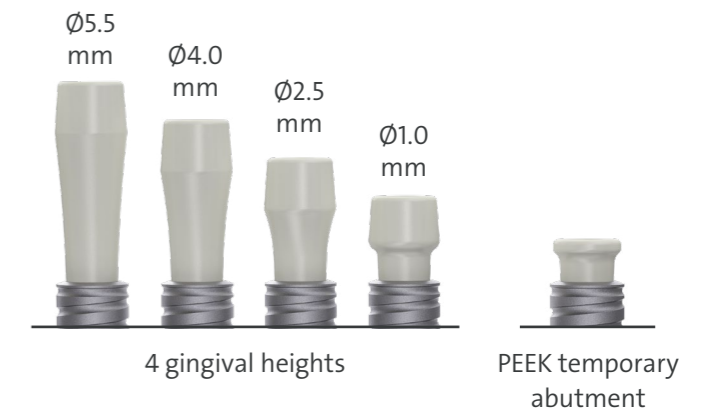
FULLY CONTROLLED SOLUTION

- Fully controlled and reproducible impaction using the Safe Lock[®] calibrated instrument.



COMPREHENSIVE PROSTHETIC RANGE

- 4 angulations: 0°, 7°, 15° and 23°.
- One-stage or two-stage surgery.



+ Constant emergence profile from healing plug to final abutment

- No undue tension on soft tissue.



Long term confidence with Axiom® Multi Level®



Les Aiguilles de Chamonix and l'Aiguille Verte (France)

serenity®
GUARANTEE



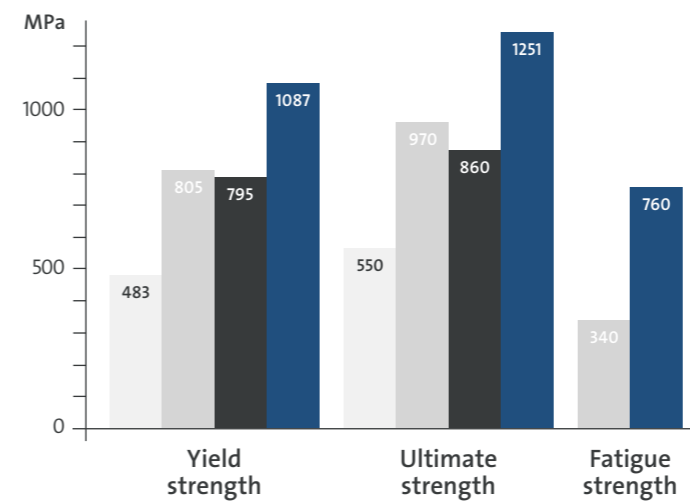
Laboratories, practitioners, we provide full guarantees for Sameda® and Multi-Platform MPS prostheses and implant restorations.

- Lifetime guarantee for customized titanium and cobalt-chrome prosthesis parts.
- 5-year guarantee for zirconia prosthesis parts.

For more information, visit www.anthogyr.com

GRADE V TITANIUM Biomechanical reliability

Axiom® Multi Level® implants and main prosthetic parts are made of Grade V Titanium. Its mechanical strength, higher than Grade IV and other Titanium alloys⁽¹⁾ allows reduced diameter implants for less invasive treatments. Grade V Titanium is also recognized for its biocompatibility in oral and orthopaedic surgery. It is scientifically proven it has no cytotoxic or genotoxic effects.⁽²⁾ The performance of Grade V Titanium osseointegration has been demonstrated⁽³⁾.



Grade IV Minimal requirements ISO5832-2 standards | Grade IV Mechanical tests (Liens Study - 2015)⁽¹⁾ | Grade IV Minimal requirements ISO5832-3 standards | Grade V Anthogyr Mechanical tests (Liens Study - 2015)⁽¹⁾

¹ Liens A., et al, Multi-scale microstructural and mechanical characterization of titanium and titanium alloys used in dentistry (2015), Poster presented at the 24th EAO's Annual Scientific Congress, Stockholm, Sweden.

² Velasco-Ortega, E., Jos, A., Cameán, A. M., Pato-Mourelo, J., & Segura-Egea, J. J. (2010). In vitro evaluation of cytotoxicity and genotoxicity of a commercial titanium alloy for dental implantology. Mutation Research/Genetic Toxicology and Environmental Mutagenesis, 702(1), 17-23.

³ Saulacic, N., Bosshardt, D. D., Bornstein, M. M., Berner, S., Buser, D (2012). Bone apposition to a titanium-zirconium alloy implant, as compared to two other titanium-containing implants. Eur Cell Mater, 23(1), 273-286.

BCP SURFACE TREATMENT Powerful bone attachment

The BCP surface treatment* of Axiom® Multi Level® implants provides effective osseointegration and implant stability thanks to a rough texture and a compatibility preserved with no peri-implant contamination.



Microscopic observation (x500) of implant surface with Anthogyr BCP surface treatment

*Soustractive treatment with Biphasic Calcium Phosphate media.

OPTIMAL BONE REMODELING AROUND AXIOM® IMPLANTS



Control after 3 years
Dr Salina, S.

Axiom® BL REG implants demonstrated outstanding bone stability and excellent aesthetic results in a prospective 3-year multicenter randomized controlled clinical trial.

International Journal of Oral Implantology, 12(2)

Salina, S., Gualini, F., Rigotti, F., Mazzarini, C., Longhin, D., Grigoletto, M., ... & Esposito, M. (2019). Subcrestal placement of dental implants with an internal conical connection of 0.5 mm versus 1.5 mm: Three-year after loading results of a multicentre within-person randomised controlled trial.



ANTHOGYR
UNITED KINGDOM
3 Pegasus Place
Gatwick Road
Crawley RH10 9AY

www.anthogy.com

